



Academy of Urbanism Congress 2021

Daisy Narayanan
Senior Manager – Placemaking and Mobilty



We are the Capital of Scotland;

We are a diverse, cosmopolitan city of over 513,000 people and growing;

We are a World Heritage Site, twice over;

We are a Royal Residence;

We are the home of the Scottish Government and Parliament;

We are a seat of learning with 4 universities, the first and most famous of which was founded in 1582 by the Town Council under a royal charter;

We are known for our cultural events and festivals, our Hogmanay celebrations and for our 4.9 million plus per year visitors;

The City and the South East of Scotland powers 24% of the total Scottish economy;

We are also the birthplace of Harry Potter

We are Edinburgh.



Edinburgh 2030 Climate Strategy

Transport



A city where travelling by foot, wheel, or by bike is the easiest and cheapest option.

The city has a well-connected and sustainable transport and active travel network.

Investment in neighbourhoods, town and city centres improves citizen health and wellbeing.





CITY MOBILITY PLAN 2021-2030

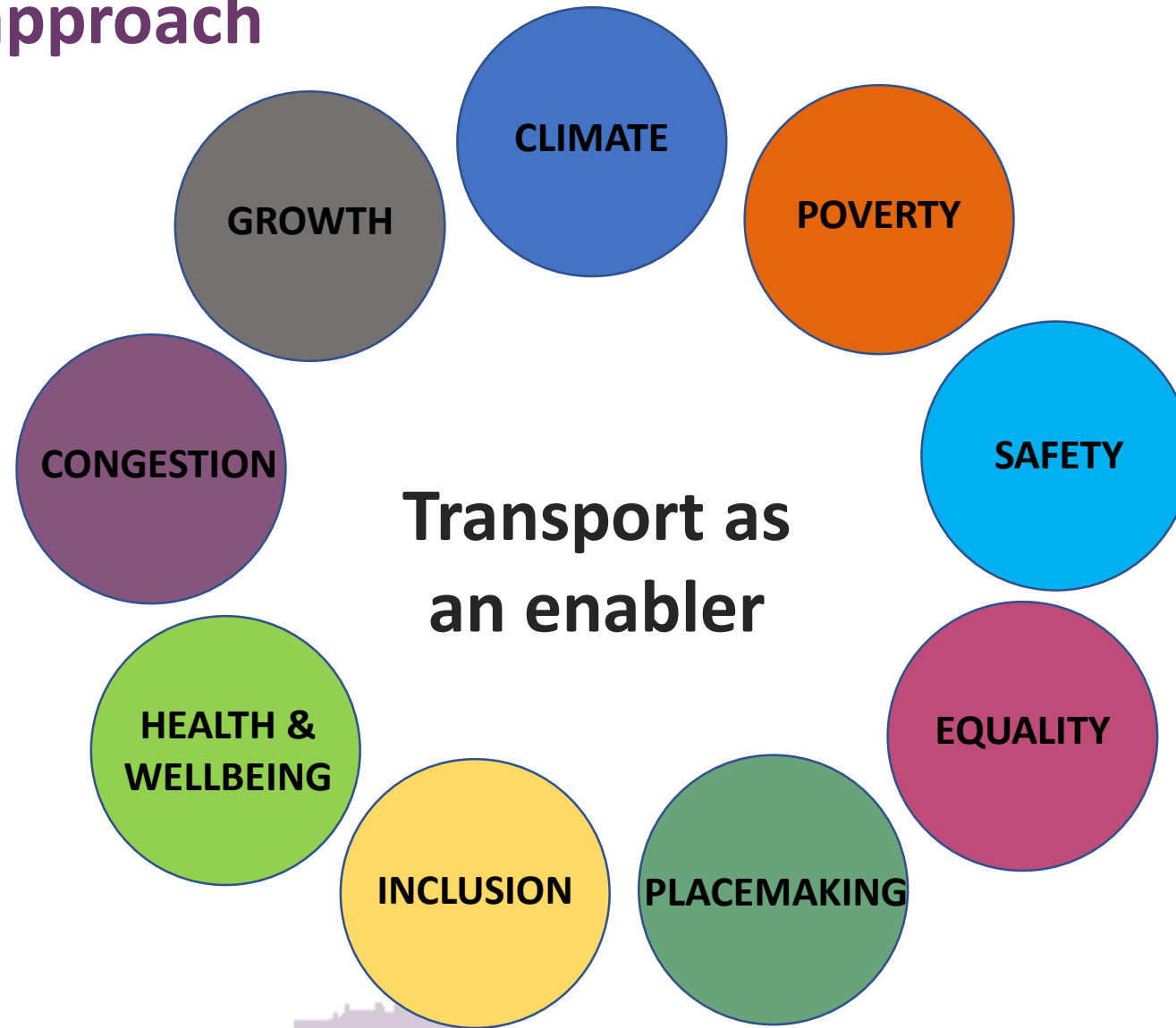
•EDINBURGH•
THE CITY OF EDINBURGH COUNCIL



Living well *locally*



A holistic approach



People

- Making Sustainable Choices
- Equal Access to the City
- Public Health and Wellbeing
- People are the Plan



Movement

- Sustainable and Integrated Travel
- Safe and Efficient Movement
- Clean Air and Energy
- Managing Demand

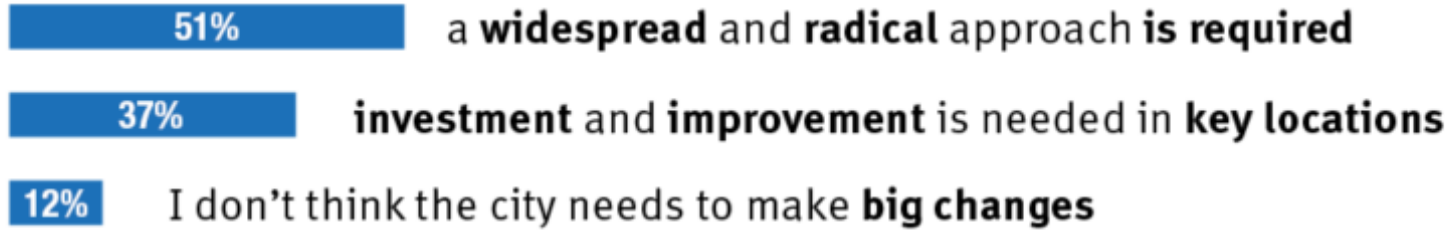


Place

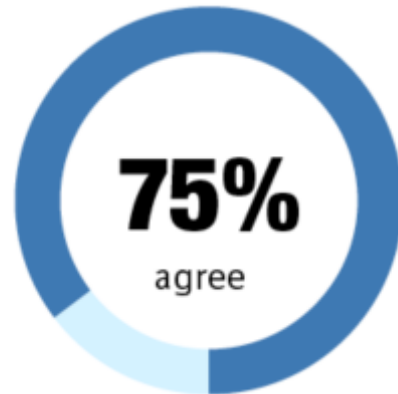
- Our City
- A Transformed City Centre
- 20-Minute Neighbourhoods
- Streets for People



How ambitious do you think Edinburgh needs to be to deliver a CITY that works for you?



Safe and attractive walking - cycling routes



of survey respondents **agree** that by creating a **safe, attractive**, accessible and connected **network** of **walking** and **cycling routes**, more people would choose to walk or cycle

Quality Central Public Spaces



of survey respondents **are satisfied** with the quality of **central public spaces**









A dramatic silhouette of the Edinburgh skyline against a vibrant orange and yellow sunset sky. The sun is a bright, glowing orb partially obscured by clouds, positioned in the upper right. The city's architecture, including the prominent spire of St. Giles' Cathedral and the silhouette of Edinburgh Castle, is dark against the bright sky. The foreground shows the dark, sloping rooflines of buildings on a hill.

Thank you

◆ EDINBURGH ◆
THE CITY OF EDINBURGH COUNCIL