

a. . .  
. . m. área  
. l. . metropolitana  
de lisboa

# Lisbon's Covid 19 recovery: community participation and cohesion

THE ACADEMY  
OF URBANISM

RESPONSIVE CITIES  
Adapting Under Pressure  
16-18 June 2021

Edinburgh

a. . .  
. . m. área  
. l. . metropolitana  
de lisboa

# Political and Territorial Framework

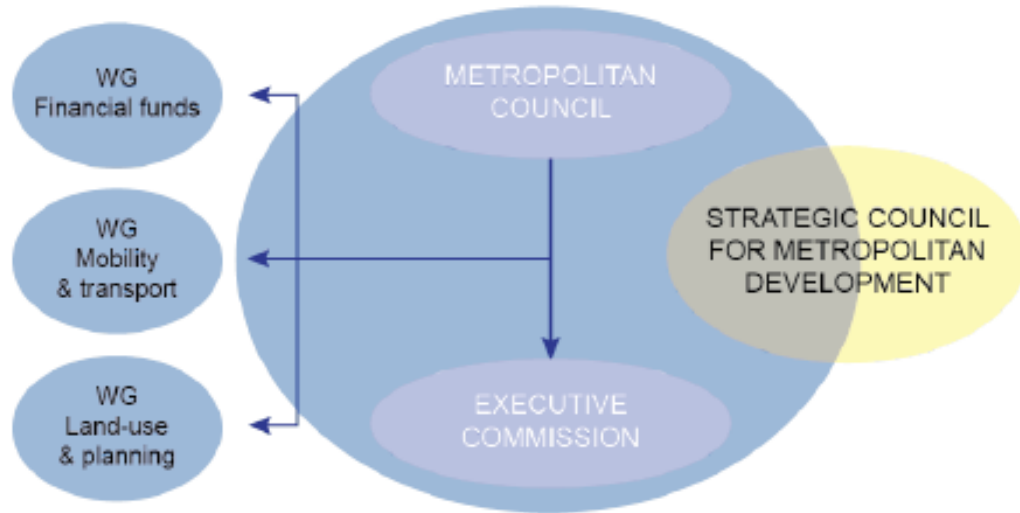
- PT unitary state
- PT constitution: 3 levels, but...
- Regions with democratic legitimacy does not exist
- 2 metropolitan areas

- 18 municipalities
- 3.015 km<sup>2</sup>
- 2 821 349 inhabitants
- 27% PT population
- 36,1% PT GDP

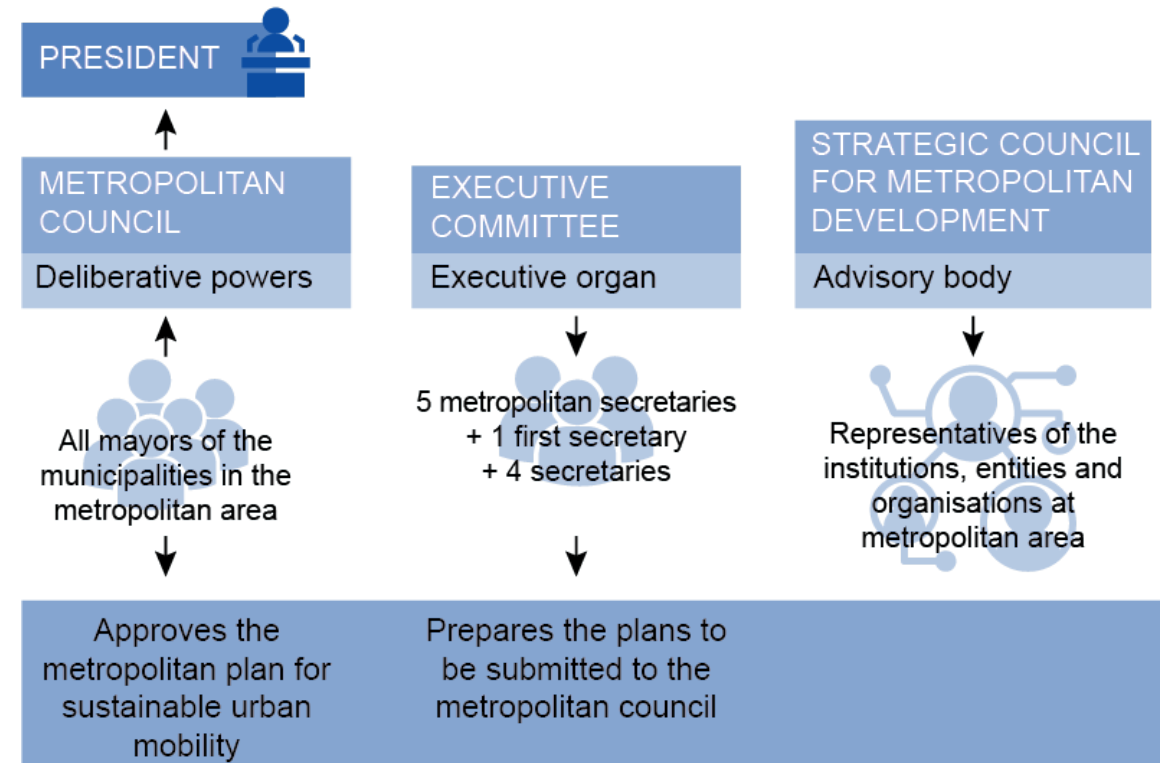


a. . .  
 . . m. área  
 . l. . metropolitana  
 de lisboa

# Governance Framework



## Metropolitan governance system in Lisbon



Source: SUMP in Metropolitan Regions, 2019

# Metropolitan planning, participation and resilience

## Main goals

### Knowledge

Increase technical and scientific knowledge about climate change, its implications for the Metropolitan Area.

### Capacity Building

Prepare local public and private institutions and communities for the challenges of climate change, and for adaptation.

### Planning

Promote a transversal culture of adaptation to the various municipalities and strategic sectors by defining adaptive paths.



## Methodological approach

### Phase 1 Base scenario for adaptation

STAGE 01. | Scope, context and objectives

STAGE 02. | Climate contextualization

STAGE 03. | Bioclimatic scenarization

STAGE 04. | Evaluation of the institutional environment at local scale

STAGE 05. | Socioeconomic context and scenarization

### Phase 2 Impacts and vulnerabilities

STAGE 06. | Evaluation of present climate impacts and vulnerabilities

STAGE 07. | Evaluation of future climate impacts and vulnerabilities

#### ENAAAC sectors approach



- Agriculture and forestry
- Biodiversity and landscape
- Economy
- Energy
- Water resources
- Human health
- Civil protection
- Transports and communications
- Coastal areas and sea

### Phase 3 Adaptation options

STAGE 08. | Adaptation measures at metropolitan, municipal and sectoral level

STAGE 09. | Integration of adaptation in municipal, intermunicipal and metropolitan planning

STAGE 10. | Models, processes and instruments for management, governance and monitoring



February 2018 – July 2018



May 2018 – December 2018



January 2019 – December 2019

# Metropolitan planning, participation and resilience

## Multilevel and multiactor capacity building: training of local officials and stakeholder engagement



### Conferences

3 events

790 participants

+ 300 entities



### Workshops TEC

6 events

309 participants

18 municipalities LMA



### Workshops STAKEHOLDERS

35 events

1.601 participants

+ 150 entities

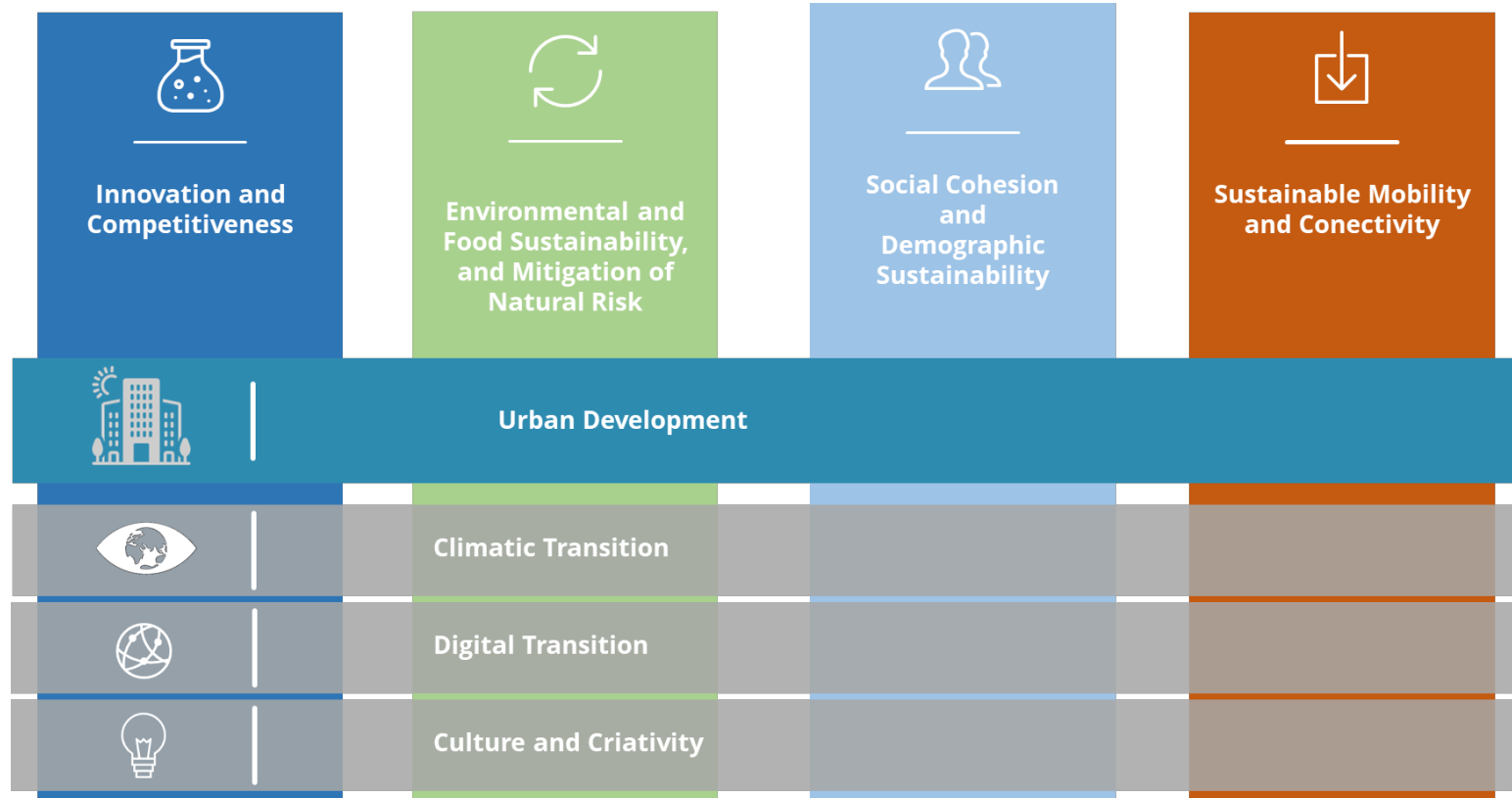
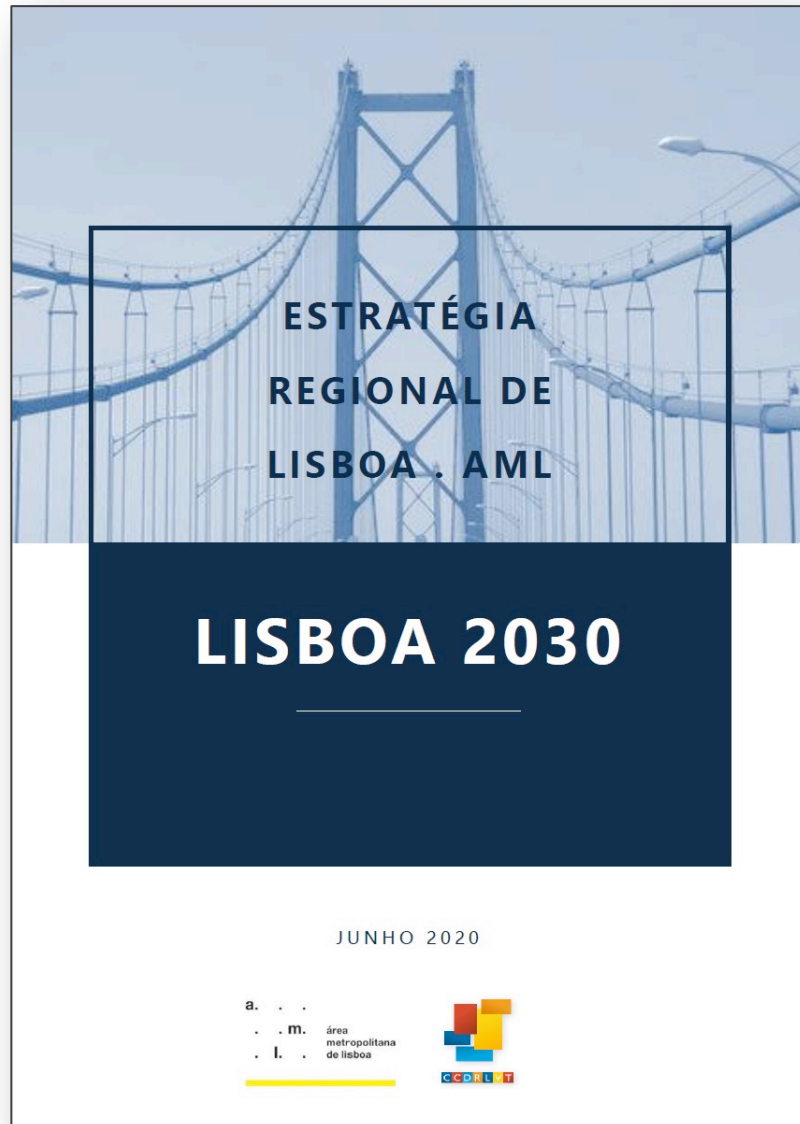
**+/- 2.700**  
participants

**18**  
municipalities

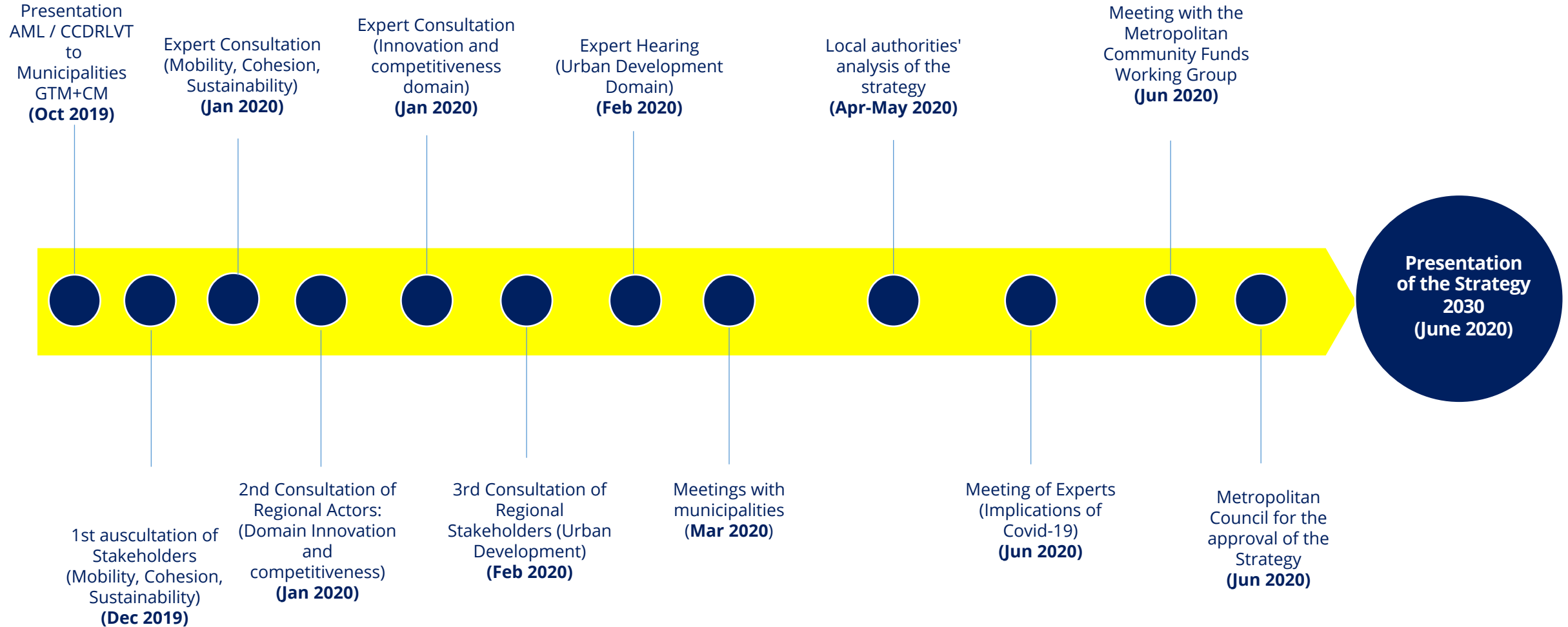
**+ 300**  
entities



# Metropolitan planning, participation and resilience



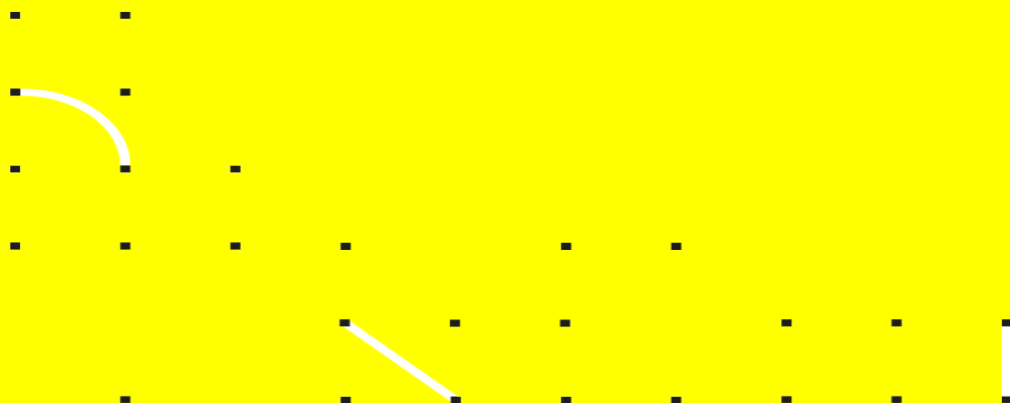
# Metropolitan planning, participation and resilience



a. . .  
. a.m. área  
. l. metropolitana  
de lisboa

. . m. área  
. l. metropolitana  
de lisboa

And then... COVID 19





## 3 Main Challenges

- Territorial Policy Coordination
- Communication Exchange
- Expectations regarding metropolitan level

## What was done

Articulation with national government, municipalities and other territorial stakeholders of a regional action plan of COVID-19 testing in social services workers

Creation of a Metropolitan Integrated Platform for the management of critical products, equipment and resources, in order to ensure that resources are permanently allocated to the municipalities most needy.

Joint procurement of critical products, equipment and resources, in order to meet the needs of municipalities, public services and social organizations in Lisbon Metropolitan Area;

Identification in a daily basis of the initiatives and measures that are being taken in each municipality and disseminate them for all LMA municipalities

Strengthen of the permanent communication network between LMA and our 18 municipalities to ensure that high-level meetings are held on a regular basis, with the participation of mayors, to coordinate interventions and adopt new measures

As Metropolitan Transport Authority, LMA has taken measures to ensure the safety of workers and population who need to use public transport to get to their work and other related activities

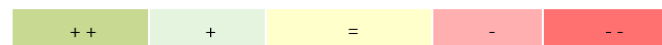
Redirecting ESIF operations to COVID 10 emergency measures in cooperation with Management Authorities and national government

# Lisbon Regional Strategy COVID-19 Dashboard

Domain	Subdomain	Priority	2020	Duration of the Strategy	
				2021-2022	> 2023
Innovation and Competitiveness	Knowledge and Research	To increase internationally recognised scientific production in the areas defined in the national (ENEI) and regional (EREIL) smart specialisation strategies.	-	=	=
		To increase interaction and the transfer of knowledge by promoting insertion in international and national networks of clustering and scientific and technological excellence.	-	=	=
		Increase the national and international attractiveness of higher education.	--	-	=
	R&D&I System and Economic Ecosystem	To increase the levels of transfer of scientific and technological knowledge to companies.	--	-	=
		To expand the levels of R&D&I competences through the hiring of highly qualified resources.	--	-	=
	Specialisation, Differentiation and Internationalisation	To increase the levels of specialisation and differentiation of the economic base.	--	+	++
		Increase the capacity to attract foreign direct investment (FDI).	--	-	+
		To strengthen the entrepreneurial capacity of SMEs for the development of innovative and value-generating products and services.	--	+	+
		To increase levels of business investment in innovative activities, fostering an increase in tradable and internationalisable production and progression in value chains.	--	+	+
		To reinforce and extend the participation and integration of companies in international networks that value research and development as a factor for competitiveness.	--	+	+

Social Cohesion and Demographic Sustainability	Education and Training	Increase levels of human capital preparation for the challenges of metropolitan productive modernisation, ensuring gender equality.	=	++	++
		Expand lifelong learning opportunities, promoting social resilience to economic crises and productive transformations.	-	+	+
		To increase the levels of articulation between labour market coordinating entities, companies and territorial actors.	-	+	+
		To qualify and modernise education and training infrastructures, filling in gaps and obsolescence.	=	+	+
	Job Market	Reduce the incidence of early school leaving and failure.	--	-	=
		Ensure high levels of employment and decent work for all, including for persons with disabilities, and equal pay for work of equal value.	--	-	=
		Increasing the levels of youth participation in the labour market, providing a sustainable transition to working life.	--	--	=
	Innovation and Social Inclusion	Modernising institutions and ways of providing employment and employability support services.	=	+	+
		Strengthen the capacity of Social Networks and Multi-Council Platforms to act.	+	+	+
		Increase levels of innovation and social entrepreneurship.	+	+	+
		Strengthen the social and solidarity economy.	--	-	=
	Attraction and Inclusion of the Immigrant Population	Increasing citizens' digital skills, guaranteeing equal opportunities.	--	+	+
		Increase the levels of attraction of qualified and specialised labour.	--	-	=
		To broaden levels of social inclusion and professional integration, helping immigrants to play an active part in economic and social development.	--	--	=
		To increase levels of tolerance and appreciation of cultural, religious and ethnic diversity, promoting pluralism.	--	-	=

Impact for the achievement of the Strategy



Opportunity

Indifferent

Threat

a. . .  
 . . m. área  
 . l. metropolitana  
 de lisboa

# COVID-19: Recovery priorities

## Mobility



Sustainable  
Mobility



Transport and  
decarbonization



C15. Sustainable  
Mobility

## Environment and Climate Adaptation



Adaptation to  
Climate Change



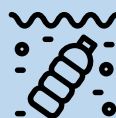
Biodiversity and  
green  
infrastructure



Urban water  
cycle



Risk mitigation



Waste

## Health and Social Inclusion



C1. Primary health  
care



C3. Social  
answers

## Housing



C2. Housing



C12. Residential  
Energy  
Efficiency

## Urban Regeneration



Urban  
regeneration for  
competitiveness



C3.  
Regeneration of  
disadvantaged  
communities

## Education



Education and  
training



School  
equipment

OP2

OP4

OP5

CF

RRF

a. . .  
. . m. área  
. l. . metropolitana  
de lisboa

